

MOW General Clerk v003

Hand Grip – Position 2



Employees are required to grip various tools and parts. Applicants must demonstrate the ability to generate the required force to accomplish this task. During this test, applicants will grip a testing device with each hand separately.

Pallet Jack Push



Employees are required to push pallet jacks and other mobile objects. During this test, applicants will push a testing device away from the body to demonstrate the ability to generate the force required to accomplish this task.

Pallet Jack Pull



Employees are required to pull pallet jacks and other mobile objects. During this test, applicants will pull a testing device toward the body to demonstrate the ability to generate the force required to accomplish this task.

Low Dynamic Lift - Occ



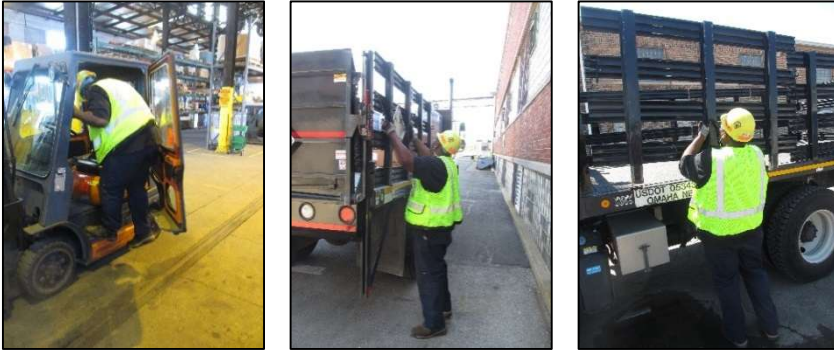
A variety of objects are lifted, manipulated, and placed to perform mechanical tasks. Applicants must demonstrate the ability to lift and set a progressively loaded weight to waist height. During this test, applicants will lift a crate between a shelf and a platform.

Dynamic Carry - Occ



Employees are required to carry a variety of objects. Applicants must be able to carry heavy objects in a safe and efficient manner. During this test, applicants will lift and carry a crate. Applicants will lift the crate off a shelf and carry it 10 feet, turn around, and then return the crate to the shelf

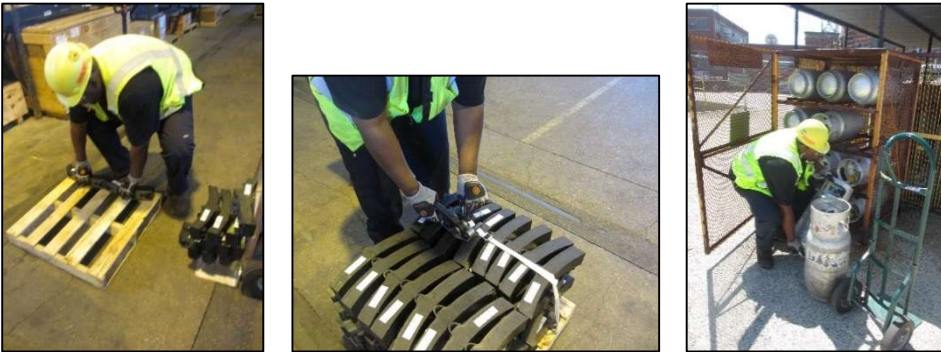
Upper Reach – Occ (90)



Employees are required to reach overhead when performing essential functions of the job. They may be required to work with their hands overhead for extended periods of time, with the ability to change position as needed. Applicants must demonstrate their ability to work in this position safely. During this activity, applicants will be asked to move pegs from one panel to the next panel and back for a set number of repetitions.

- **NEED DIFFERENT ONSITE PICTURES**

Stoop Reach



Employees are required to stoop to perform essential functions of the job. Employees may be required to work in this position for extended periods of time. Applicants must demonstrate the ability to work in this position safely. During this activity, applicants will be asked to move pegs from one panel to the next panel and back for a set number of repetitions.

- **NEED DIFFERENT ONSITE PICTURES**